

The logo for Maple Suites is rendered in a stylized, teal-colored script font with a white outline. The word "Maple" is on the top line and "Suites" is on the bottom line. To the right of the text is a decorative graphic consisting of two palm trees and a large, stylized leaf or branch that curves around the text. The background of the entire image is a vibrant tropical beach scene with a clear blue sky, turquoise water, and a sandy shore lined with palm trees.

# Maple Suites

Punta Cana, D.R.





# Punta Cana

Is one of the most important tourist destinations in the Caribbean, due to its paradisiacal landscapes and because it offers a unique experience to all visitors.



# Punta Cana Int. Airport



- The first privately-owned airport in the world.
- 2nd largest airport in all of the Caribbean.
- Only 15 minutes away from most of the hotels in the area.
- Direct flights to most major cities in the world.

# Maple Suites

Is a private community located in Cortecito, Bávaro - Punta Cana, DR. and it benefits from being a few steps from Bávaro Beach.

The Project consists of a building of 58 Suites of 78 sq. mts. / 839.59 sq. ft. each.





# Location

El Cortecito, Bávaro - Punta Cana, Dominican Republic.

- 2 min Bávaro Beach.  
(walking distance)
- 20 min Int. Airport of Punta Cana.
- 10 min Los Corales Beach.
- 10 min Cocotal Golf & Country Club.
- 10 min Katmandú Park

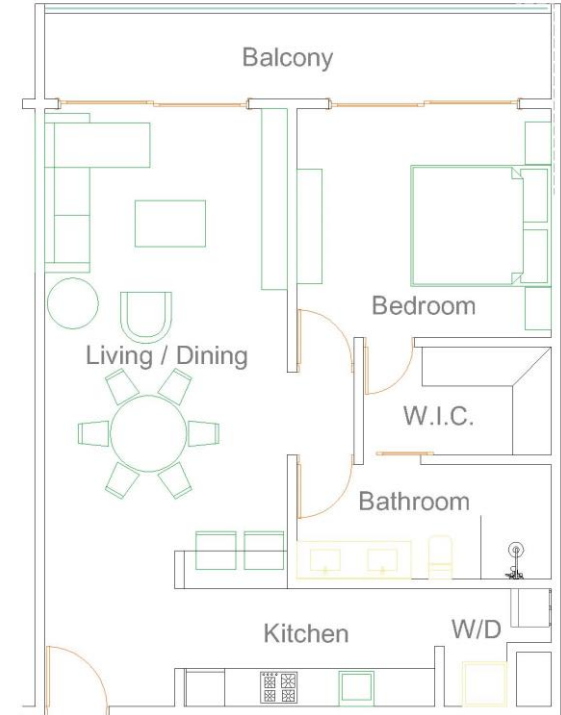


# General Information



## Description:

- Common Pool Area
- Type: 1BR Apartment
- Total: 58 Suites with 78 Sq. mts each / 839.59 sq. ft.
- Living / Dining
- Kitchen
- Laundry Area
- Bedroom with Bathroom & Walk-in-closet.
- Balcony

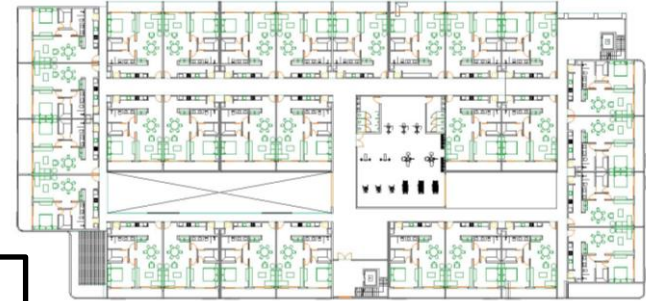
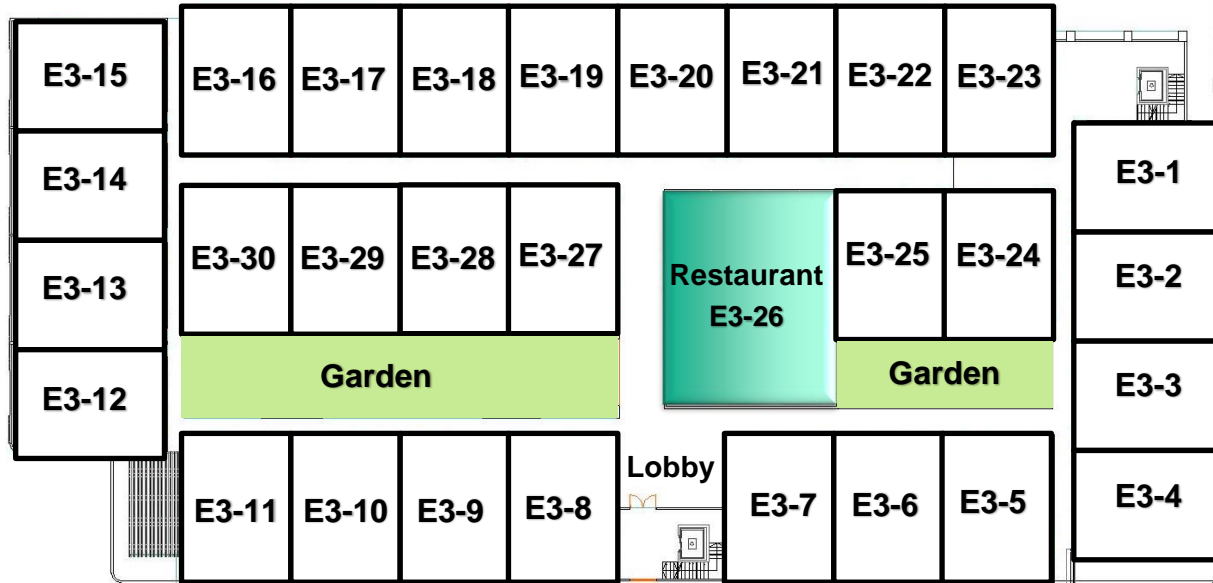






**Price: From US \$160,000**

# Master Plan & Availability



**Floor Plan**  
3<sup>rd</sup> Floor

**Price: US \$160,000**

**Availability**

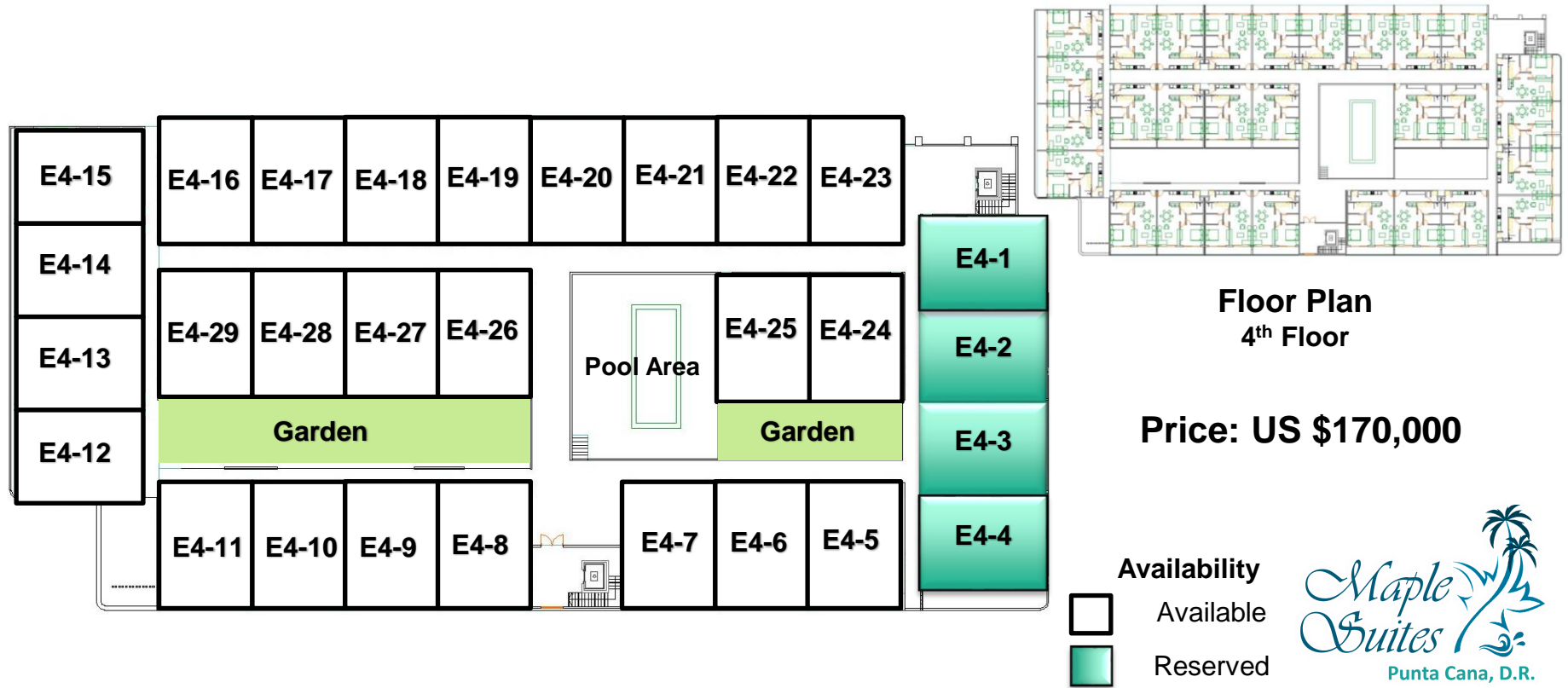


Available

Reserved







# Amenities

- Reception / Lobby.
- Pool on the 4th floor.
- Elevators.
- Private Security 24/7.
- Private Covered Parking for residents & guests.
- Fully Furnished.
- Restaurant.
- Shopping.
- Private Beach Club.





# Payment Plan

Reserve with US \$5,000

15%

Completed in 30 days with  
signing of the contract

Balance completed during  
construction

Delivery date (September 2024)



*Maple  
Suites*  
Punta Cana, D.R.



**Thank you!**

